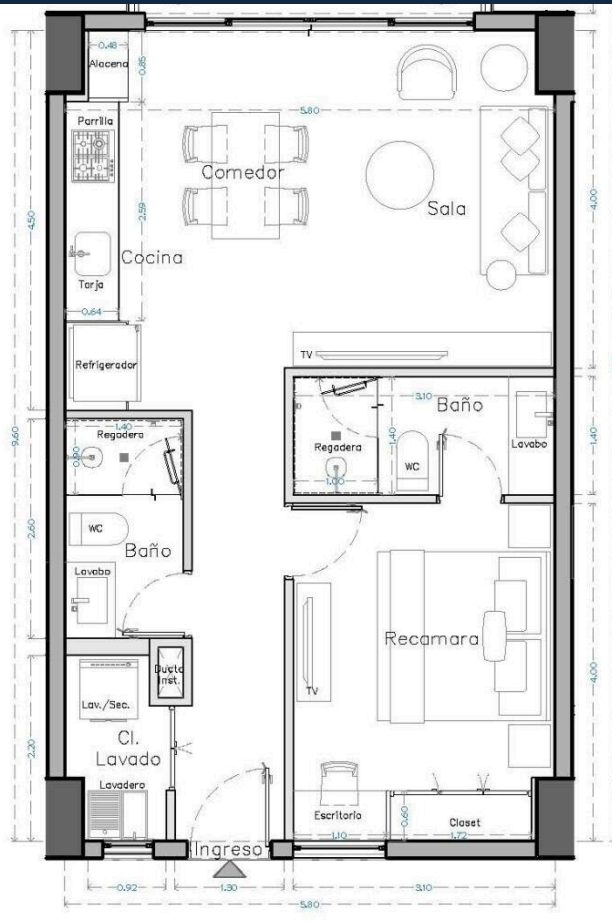


U-703 SUPERFICIES

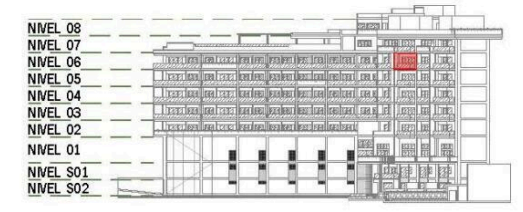
M2 INTERIORES : 60.00 M2

M2 EXTERIORES : 6.54 M2

M2 TOTALES : 66.54 M2



FACHADA NORTE (OCEANO)



FACHADA DESDE CARRETERA



ESCALA:

South Bay 703

\$545,923.00 USD

South Bay | 65 # Units in Develop | Emiliano Zapata
Centro South, Puerto Vallarta
MLS ID: 39721

General Information

Total m2:	66	Total M2 const:	66.54
Total SqFt:	715.97	Walls:	Concrete, Sheetrock
Price/Sq Meter:	8,204.43	Total Bedrooms:	1
Total Baths:	2	Full baths:	2
Floor Number:	Nivel 7	Primary View:	Ocean
Secondary View:	City	Furnished:	Unfurnished
Pet Friendly:	Yes	Parking:	Parking on Property
Location:	City		

Features & Amenities

Common Amenities

24 Hours Security:	Elevator:
Fire Pit:	Garden:
Gym:	Intercom:
Jacuzzi:	Pool:

Appliances

Hood/Vent:	Refrigerator/Freezer:
Oven:	Cook Top:

Devices

Air Conditioning:	Mini-Split
-------------------	------------

Hoa Info

Hoa Name:	Dues per month (\$MX):	7,087.00
24-hr Security:	Building Insurance:	
Common Area Electric:	Common Area Maintenance:	
Garden Maintenance:	Gym:	
On-Site Admin:	Pool Maintenance:	

Especifications

Days On Market	304	Pre-Construction	Yes
Est. Delivery Date	2027-02-10	Construction Manifest	No
Title	Escritura, Fideicomiso	Electricity	CFE
Water	City	Sewage	City
Road Type	Paved		