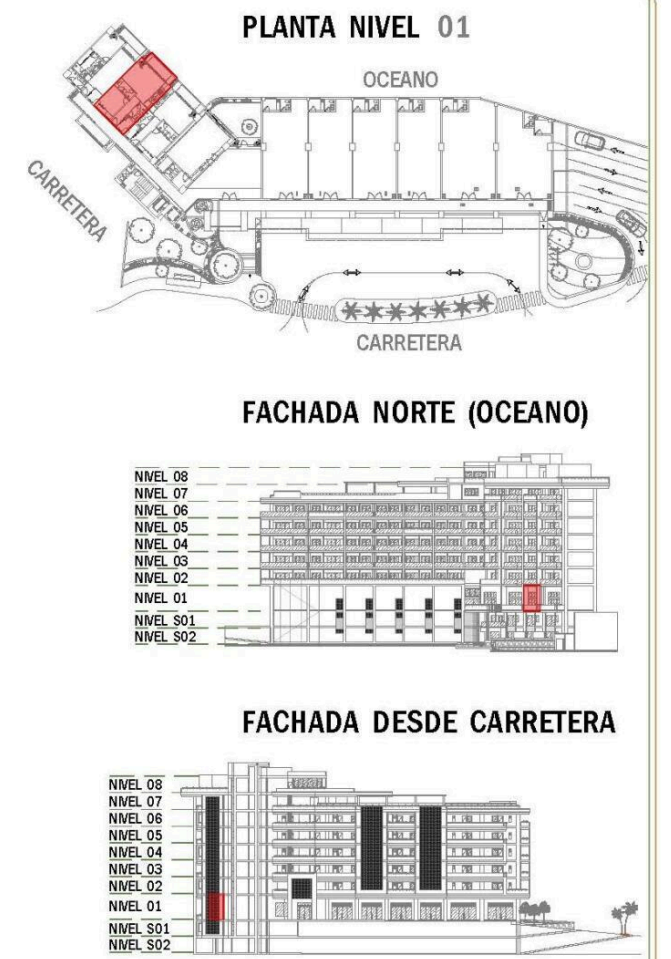
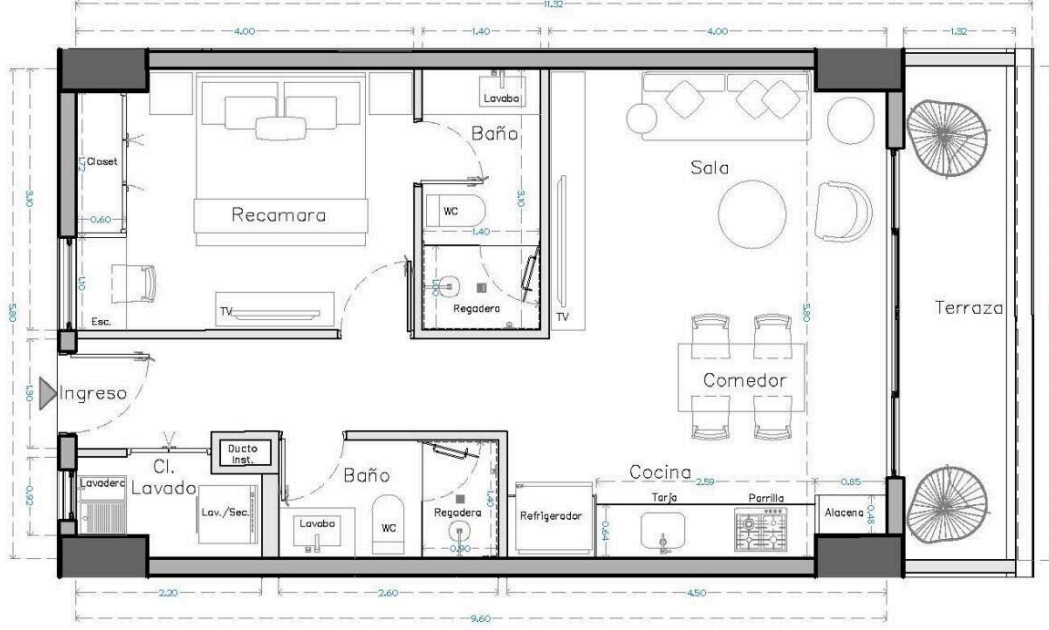


## U-102 SUPERFICIES

M2 INTERIORES : 60.00

M2 EXTERIORES : 9.12

M2 TOTALES : 69.12



ESCALA:

## South Bay 102

\$403,784.00 USD

South Bay | 65 # Units in Develop | Emiliano Zapata  
Centro South, Puerto Vallarta  
MLS ID: 39729

### General Information

|                 |          |                 |                     |
|-----------------|----------|-----------------|---------------------|
| Total m2:       | 69       | Total M2 const: | 69.12               |
| Total SqFt:     | 743.73   | Walls:          | Concrete, Sheetrock |
| Price/Sq Meter: | 5,841.78 | Total Bedrooms: | 1                   |
| Total Baths:    | 2        | Full baths:     | 2                   |
| Floor Number:   | Nivel 01 | Primary View:   | City                |
| Secondary View: | Mountain | Furnished:      | Unfurnished         |
| Pet Friendly:   | Yes      | Parking:        | Parking on Property |
| Location:       | City     |                 |                     |

### Features & Amenities

#### Common Amenities

|                    |  |           |  |
|--------------------|--|-----------|--|
| 24 Hours Security: |  | Elevator: |  |
| Fire Pit:          |  | Garden:   |  |
| Gym:               |  | Intercom: |  |
| Jacuzzi:           |  | Pool:     |  |

#### Appliances

|            |          |                       |          |
|------------|----------|-----------------------|----------|
| Hood/Vent: |          | Refrigerator/Freezer: |          |
| Oven:      | Electric | Cook Top:             | Electric |

#### Devices

|                   |            |               |          |
|-------------------|------------|---------------|----------|
| Air Conditioning: | Mini-Split | Water Heater: | Electric |
|-------------------|------------|---------------|----------|

### Hoa Info

|                       |  |                          |          |
|-----------------------|--|--------------------------|----------|
| Hoa Name:             |  | Dues per month (\$MX):   | 7,361.00 |
| 24-hr Security:       |  | Building Insurance:      |          |
| Common Area Electric: |  | Common Area Maintenance: |          |
| Garden Maintenance:   |  | Gym:                     |          |
| On-Site Admin:        |  | Pool Maintenance:        |          |

### Especifications

|                       |      |                    |                        |
|-----------------------|------|--------------------|------------------------|
| Days On Market        | 304  | Year Built         | 2026                   |
| Pre-Construction      | Yes  | Est. Delivery Date | 2027-02-10             |
| Construction Manifest | No   | Title              | Escritura, Fideicomiso |
| Electricity           | CFE  | Water              | City                   |
| Sewage                | City | Road Type          | Paved                  |