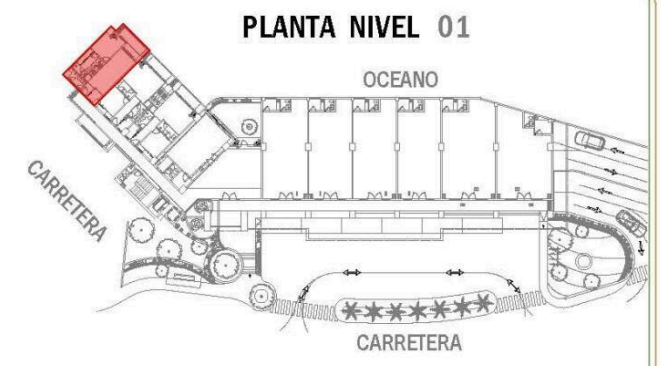
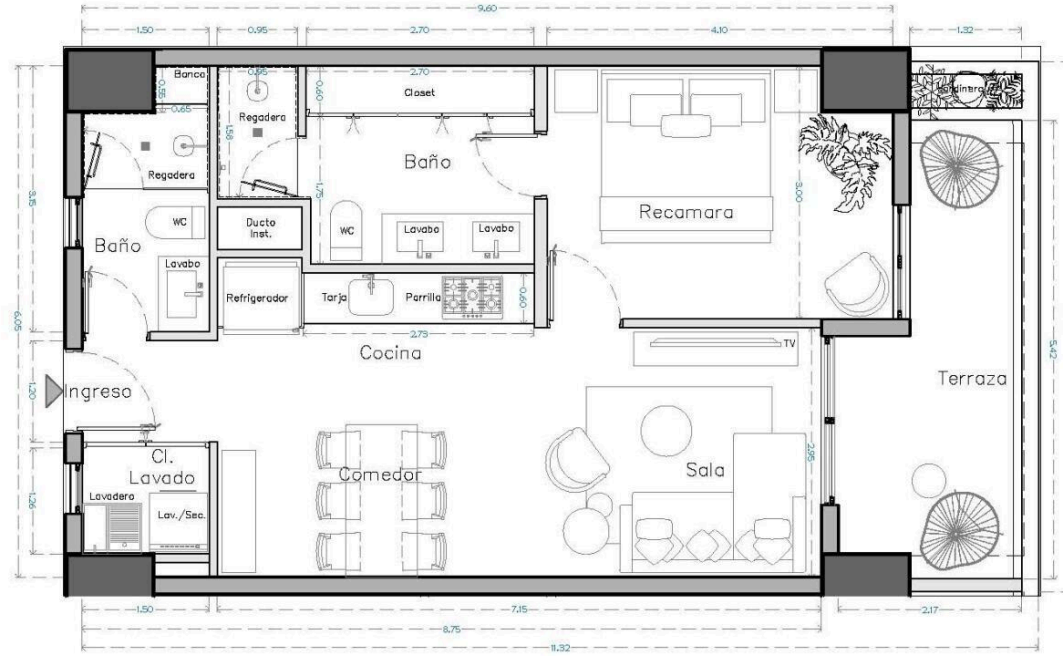


## U-101 SUPERFICIES

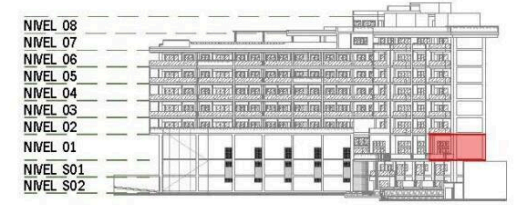
M2 INTERIORES : 63.50

M2 EXTERIORES : 9.43

M2 TOTALES : 72.93



### FACHADA NORTE (OCEANO)



### FACHADA DESDE CARRETERA



ESCALA:

## South Bay 101

\$442,368.00 USD

South Bay | 65 # Units in Develop | Emiliano Zapata  
Centro South, Puerto Vallarta  
MLS ID: 39361

### General Information

Total m2:	72	Total M2 const:	72.93
Total SqFt:	784.72	Walls:	Concrete,Sheetrock
Price/Sq Meter:	6,065.65	Total Bedrooms:	1
Total Baths:	2	Full baths:	2
Floor Number:	Nivel 01	Primary View:	Garden
Secondary View:	Garden	Furnished:	Unfurnished
Pet Friendly:	Yes	Parking:	Parking on Property
Location:	City		

### Features & Amenities

#### Common Amenities

24 Hours Security:		Elevator:	
Fire Pit:		Garden:	
Gym:		Intercom:	
Jacuzzi:		Pool:	

#### Appliances

Hood/Vent:		Refrigerator/Freezer:	
Oven:	Electric	Cook Top:	Electric

#### Devices

Air Conditioning:	Mini-Split	Water Heater:	Electric
-------------------	------------	---------------	----------

### Hoa Info

Hoa Name:		Dues per month (\$MX):	7,767.00
24-hr Security:		Building Insurance:	
Common Area Electric:		Common Area Maintenance:	
Garden Maintenance:		Gym:	
On-Site Admin:		Pool Maintenance:	

### Especifications

Days On Market	304	Year Buit	2026
Pre-Construction	Yes	Est. Delivery Date	2027-02-10
Construction Manifest	No	Title	Escritura,Fideicomiso
Electricity	CFE	Water	City
Sewage	City	Road Type	Paved